

CORE DRILLING 2019

NEW: DR. SCHULZE DRILL MOTORS

DDM-22 NT, DDM-33, DDM-52

GENERAL TECHNICAL DESCRIPTION:

- extremely robust design for daily use
- stable housing made of high-strength aluminum alloy
- multi-level protection (starting current limiter, overload protection)
- LED indication of the operating status (DDM-22 NT and DDM-33 only)
- high performance slipping clutch

100% Made in Germany
New generation of Dr. Schulze drill motors for professional applications and heavy duty operation on challenging construction sites

DDM-22 NT **NEW**

Universal and powerful 2,2 kW drill motor for holes up to Ø160 mm in free hand and drill rig use

- universal motor for wet and dry drilling
- optimal weight distribution for fatigue-free working
- delivery in a practical transport case
- removable front handle
- clamping neck diameter Ø80 mm
- included in scope of delivery: Gardena water connection, GEKA connection for dust extraction
- serial PRCD and Schuko-plug

DDM-33 **NEW**

Robust and powerful 3,3 kW drill motor for daily use on construction sites and holes up to Ø450 mm

- extremely wide drilling range Ø45 - 450 mm
- integrated oil pump ensures constant lubrication of all gear parts
- comfortable handle bar
- serial PRCD and Schuko-plug

DDM-52 **NEW**

Robust and powerful 5,2 kW / 400 Volt drill motor for particularly demanding projects with drilling range of up to Ø500 mm

- completely sealed version without ventilation slots
- integrated oil pump ensures constant lubrication of all gear parts
- extremely wide drilling range Ø100 - 500 mm
- comfortable handle bar

NEW: with optional warranty for 2 years

		DDM-22 NT	DDM-33	DDM-52
drilling diameter	[mm]	15 - 160	45 - 450	100 - 500
motor		2,2 kW / 230 V	3,3 kW / 230 V	5,2 kW / 400 V
gears		3	3	3
rotation speed	[min ⁻¹]	520 / 1400 / 2900	180 / 430 / 750	120 / 280 / 440
spindle		1 1/4" + 1/2"	1 1/4"	1 1/4"
weight [kg]	[kg]	5,8	13,6	22,8

LED
load indication

DRILL STANDS D-SERIES



D-160V

D-250V

Ultra light weight, compact drill rig with integrated vacuum base, laser positioning guide and continuously inclinable up to 45°

D-350R

D-350RS

D-400X

High performance drill rig with stable base, transport rollers and quick release plate for bores up to Ø350 (D-400X up to Ø400)

- clamping Ø60 mm with quick release system (D-160V)
- motor quick release plate (D-250V)
- low-maintenance and stable sliding guide system (D-160V)
- low-maintenance and smooth-running roller guide system (D-250V)
- vacuum base incl. vacuum set and leveling screws
- integrated spirit level for precise alignment
- V-support for starting of drilling
- laser drilling center indication
- incl. tool set

- low-maintenance and smooth-running roller guide system (D-350R, D-350RS)
- low-maintenance and stable sliding guide system (D-400X)
- continuously inclining up to 45°
- strong cast base with leveling screws (D-350R, D-400X)
- heavy-duty, compact steel welded base with pivot overturn support (D-350RS)
- column movable in drilling direction - no extensions for inclined drilling necessary (D-350RS)
- easy removable transport wheels
- motor quick release plate

		D-160V	D-250V	D-350R	D-350RS	D-400X
max. drilling diameter	[mm]	160	250	350	350	330 / 400 ¹
sliding guide system		✓	-	-	-	✓
roller guide system		-	✓	✓	✓	-
integrated vacuum base incl. vacuum set		✓	✓	-	-	-
laser positioning guide		✓	✓	✓	-	✓
transport rollers (removable)		-	-	✓	✓	✓
integrated spirit level		1	2	2	2	0
v-support		✓	✓	✓	-	✓
tool set		✓	✓	✓	✓	✓
length	[mm]	480	470	600	580	570
width	[mm]	280	290	360	365	380
height	[mm]	900	950	1040	1100	1040
weight	[kg]	9,8	14,4	19,8	21,0	19,4
total travel	[mm]	570	570	610	640	610
inclined drilling up to	[°]	45	45	45	± 45	45
spacer (incl. fastenings)	[€]	-	-	-	-	118,00

¹ with optional spacer



DRILL STANDS MASTER-SERIES



Drill-14 ECO

Drill-14

Drill-20

Drill-32 / 32L

Drill-45 / 45L

DRILL-14 ECO

Light weight and handy drill rig with motor clamping Ø80 mm for drilling diameters up to Ø150 mm

DRILL-14

DRILL-20

Compact and variable drill rig with build-in vacuum base for drilling diameters up to Ø250 mm

DRILL-32 / 32L

Robust drill rig with column support, transport wheels and quick release motor plate II.

DRILL-45 / 45L

Drill-32L/45L suitable for the use with extra long core drill bits

		Drill-14 ECO	Drill-14	Drill-20	Drill-32	Drill-32L	Drill-45	Drill-45L
max. drilling diameter ¹	[mm]	150	150	250	280 / 320 ²		500	
inclined drilling up to	[°]	-	45	45	45		45	
length	[mm]	350	450	550	520		520	
width	[mm]	220	230	330	380		380	
height	[mm]	850	900	1020	1040	1650	1300	2100
weight	[kg]	6,5	8,5	15,0	19,5	22,0	26,5	28,0
water collecting ring for Ø up to 131 mm	[€]	-	-	-	-		-	
water collecting ring for Ø up to 180 mm	[€]	-	-	-	-		-	
water collecting ring for Ø up to 300 mm	[€]	-	-	-	-		-	
(spare) cap for water collecting ring	[€]	-	-	-	-		-	
60 mm clamping with quick release plate	[€]	-	-	-	-		-	
quick release motor plate	[€]	-	-	-	-		-	
quick release motor plate II	[€]	-	-	-	-		-	
spacer 30 mm	[€]	-	-	-	-		-	
motor fixation		Clamping Ø80 mm	Clamping Ø80 mm	quick release motor plate I	quick release motor plate II		quick release motor plate II	
vacuum base		-	+	+	-		-	
build-in spirit level		+	+	+	-		-	
column support		-	-	single	single		double	
transport wheels		-	-	+	+		+	
feed gear (2 gears)		-	-	-	+		+	

¹ max. drilling diameter applies to BDK drill motors

² 320 mm with spacer



DRILL STANDS XPERT-SERIES

B-40 with extra long column
and various accessories



B-16



B-25



B-40



B-60



B-100

B-16 Durable and handy drill rigs with feeding unit with patented roll guide system for drilling diameters up to Ø160 mm (B-16) / Ø350 mm (B-25)

B-25 Durable drill rig with feeding unit with patented roll guide system for drilling diameters up to Ø700 mm with high power drill motors
Can be used with long or extra long core drills.

B-40 Durable drill rig with feeding unit with patented roll guide system for drilling diameters up to Ø500 mm with high power drill motors

B-100 Extreme robust drill rig with patented ball-bearing guide system and massive column support for bores up to Ø1000 mm for hydraulic and electrical drilling motors up to 8 kW power

		B-16	B-25	B-40	B-60	B-100
max. drilling diameter ¹	[mm]	160	300 / 350 ²	350 / 500 ²	350 / 700 ²	500 / 1000 ²
inclined drilling up to	[°]	30 (forwards) / 60 (backwards)	± 60	± 60	± 60	30 (forwards) / 60 (backwards)
length	[mm]	250	330	360	410	580
width	[mm]	180	200	250	300	525
height	[mm]	800	950	1140	1540	1650
weight	[kg]	11,5	16,0	26,0	37,0	65,0

¹ max. drilling diameter applies to BDK drill motors

² with spacer (optional)

- feeding with replaceable gear rack
- patented feeding unit with roll guides (with ball bearings)
- foot plate with leveling screws
- column up to 60° for- and backwards inclinable
- column, foot plate and rolls made of stainless steel
- transport wheels (only B-60, B-100)



accessories

	B-25	B-40	B-60	B-100
extra long column	1300 mm	1400 mm	-	-
extra long column	1980 mm	2000 mm	-	serial
feeding gearbox 1:2,8	-	serial	-	serial
transport wheels	-	-	serial	serial
drilling center indicator	-	-	-	-
adapter for 60 mm clamping	-	-	-	-
water collecting ring	132 mm	202 mm	-	202 mm
column support	820 mm	1000 mm	-	-
column support	1300 mm	1400 mm	-	serial
column support	1980 mm	2000 mm	-	-
spacer 120 mm (attached to the motor)	-	110 mm	-	300 mm
	-	190 mm	-	400 mm
quick release spacer	50 mm	50 mm	-	-
	-	170 mm	-	-



Price per piece, ex works. Our general conditions apply.
For articles marked with the conditions for machines apply.

DRILL STANDS FOR PROFESSIONALS

DRILL-50 SERIES

Variable and extremely rigid drill rig system with stainless steel column for powerful drill motors and drilling diameters up to Ø500 mm

- rigid and torsion resistant carriage housing
- low-maintenance sliding guide system for smooth-running and free of clearance feeding
- column, support, leveling screws, turnstile and essential fastening elements made of stainless steel
- carriage housing, vacuum plate, head plate and cross bars made of corrosion-resistant aluminium alloy

Drill-50 V

Drill-50 ES

DRILL-35 SERIES

NEW

Professional drill rig with roller guide system of excellent stability. With only 13 kg extremely lightweight! Available in 4 different versions - optionally with compact steel base or aluminium vacuum plate!

- extremely strong roller guide system with stainless steel rollers and guide rails for precise and smooth-running feed (only Drill-35S, 35V)
- maintenance-free plastic roller guide system without stainless steel rails (Drill-35ES, 35EV)
- stable aluminium footplate with option of vacuum fixation (only Drill-35V, 35EV)
- extremely robust and compact steel base for narrow positions (only Drill-35S, 35ES)
- swivel feet prevent the forward overturning of the rig, even with mounted drill motor (only Drill-35S, 35V, 35ES)
- motor quick release plate with eccentric shaft and operation by star handle
- star handle mountable on the left or right side
- leveling screws to compensate unevenness
- with integrated spirit levels for precise mounting of the drill rig
- tiltable without additional tools by more than 45° for inclined drilling
- transport wheels serially
- all essential fastening elements made of stainless steel



Drill-35V

Drill-35ES

Automatic drill feed motion BA-50 for Drill-50

NEW

for fully automatic control of the drilling speed in reinforced concrete. The BA-50 is designed for use with prepared SR motors (BDK 25-BA, BDK 38-BA, BDK 65-BA and BDK 68-BA), which are equipped with regulation electronics and a power source for the BA-50 feed motion. Therefore the feed motion is connected with the SR-motor by only one single cable with quick coupling.

Mount the BA-50 feed motion via quick connector on the drill rig, move the core drill bit some millimeters above the concrete surface, activate the coupling of the BA-50, press the motor start button for 2 seconds - the BA-50 already carries your job and you can manage other tasks or just relax for some minutes!

- easy installation within seconds via quick release adaptor and tension spring
- high feed force
- integrated coupling for manual and automatic operation
- insulation class IP55
- exact drilling depth adjustable by stopper
- automatic switch off when drill through or exceed vibrations
- variable limit of 90% or 70% of the engine power selectable while coring



NEW

		BA-50
nominal voltage	[V]	48
feed force	[N]	4000
feed speed	[m/min]	0 - 0,4
weight	[kg]	3,5

Adapter for stands B-series
Adapter for Drill-50



NEW

		Drill-50						Drill-35			
		V	S	PV	PS	EV	ES	S	V	ES	EV
max. drilling diameter ¹	[mm]	350 / 500 ²		350 / 500 ²		350 / 500 ²		300 / 350 ²		300 / 350 ²	
inclined drilling up to	[°]	45		45		-		over 45		over 45	
total travel	[mm]	630		630		630		580		580	
length	[mm]	425	475	425	475	425	475				
width	[mm]	280	387	280	387	280	387				
height	[mm]	1030		1030		1030		950		950	
weight	[kg]	21,0	22,5	20,5	22,0	19,0	20,5	14,5	13,0	13,5	11,5
configuration	vacuum foot plate	X		X		X		X			X
	welded steel foot plate		X		X		X	X		X	
	inclining drilling	X	X	X	X			X	X	X	X
	column support	X	X	X	X			X	X	X	X
	strengthened stainless steel column					X	X				
	2 speed gearbox with fine feeding	X	X								
	pivot overturn support	X		X		X		X	X	X	
	transport wheels	X	X	X	X			X	X	X	X
vacuum adapter, seal ring											
Spacer up to Ø350 mm											
Spacer up to Ø500 mm											
quick release motor plate ³											

¹ The max. drilling diameter applies to BDK drill motors. ² with spacer ³ for BDK drill motors

Price per piece, ex works. Our general conditions apply.
For articles marked with the conditions for machines apply.

SELECTION GUIDELINE for drill stands D- and Master-series

				drilling motors										
				DK 11	DK 08/09	DK 16/17/18	DDM- 22 NT	BDK 26	BDK 33	DDM- 33	BDK 4E	BDK 4ES	BDK 45E	DDM 52
power		[kW]		1,6	1,8	2,0	2,2	2,6	3,2	3,3	3,9	3,9	5,2	5,2
voltage		[V]		230	230	230	230	230	230	230	400	400	400	400
weight		[kg]		5,5	= 5,0	= 5,3	5,8	11,6	11,9	13,6	19,0	19,0	22,9	22,8
weight	vacuum base	page		7	7	7	1	8	8	1	9	9	9	1
[kg]	[+ / -]			maximal diameter of drilling ¹										
drill stands D-series Master-series	D-160V	9,8	✓	2	30	150	160	160	-	-	-	-	-	-
	D-250V	14,4	✓	2	-	-	-	-	250	250	-	-	-	-
	D-350R	19,8	-	2	-	-	-	-	250	350	350	-	-	-
	D-350RS	21,0	-	2	-	-	-	-	250	350	350	-	-	-
	D-400X	19,4	-	2	-	-	-	-	250	350 ²	400 ²	400 ²	325 ²	-
	Drill-14 eco	6,5	-	3	30	150	150	150	-	-	-	-	-	-
	Drill-14	8,5	✓	3	30	150	150	150	-	-	-	-	-	-
	Drill-20	15,0	✓	3	-	-	-	-	250	250	-	-	-	-
	Drill-32 / Drill-32L	19,5/ 22,0	-	3	-	-	-	-	250	320 ²	320 ²	320 ²	320 ²	-
	Drill-45 / Drill-45L	26,5/ 28,0	-	3	-	-	-	-	-	350	450	400	325	500

¹for continuous operation we recommend to use 80% of maximum drilling diameter

²with optional spacer

³notably recommended combination

SELECTION GUIDELINE for drill stands Xpert-series

				drilling motors											
				BDK 33	DDM-33	BDK 4E	BDK 4ES	BDK 45E	DDM-52	BDK 25	BDK 38	BDK 65	BDK 68	BDK 75S	BDK 75
power		[kW]	3,2	3,3	3,9	3,9	5,2	5,2	3,7	3,7	7,5	7,5	7,5	7,5	
voltage		[V]	230	230	400	400	400	400	230	230	400	400	400	400	
weight		[kg]	11,9	13,6	19,0	19,0	22,9	22,8	14,7	16,5	18,3	16,5	19,5	19,5	
weight	page	8	1	9	9	9	1	8	8	9	9	9	9		
[kg]			maximal diameter of drilling ¹												
drill stands Xpert-series	Drill-35	= 13,5	5	350 ²	350 ²	-	-	-	-	350 ²	350 ²	-	-	-	-
	Drill-50	= 21,0	5	350	450 ²	400 ²	325	500 ²	500 ²	370 ²	400 ²	-	-	-	-
	B-25	16,0	4	350 ²	350 ²	350 ²	325 ²	-	-	350 ²	350 ²	-	-	-	-
	B-40	26,0	4	350	450 ²	400 ²	325	500 ²	500 ²	370	400 ²	500 ²	350	-	-
	B-60	37,0	4	-	450 ²	400 ²	325	500 ²	500 ²	-	400 ²	500 ²	350	630 ²	-
	B-100	65,0	4	-	-	-	-	500	500 ²	-	-	500	350	630 ²	900 ²
	B600	44,3	special core dr.	-	-	-	-	500 ²	500 ²	-	-	500 ²	350	630 ²	900 ²
	B800	89,9	special core dr.	-	-	-	-	500 ²	500 ²	-	-	500 ²	350	630 ²	900 ²
¹ for continuous operation we recommend to use 80% of maximum drilling diameter															
² with optional spacer															
³ notably recommended combination															

ELECTRIC DRILL MOTORS 230 V

DK 11

compact and light weight drill motor for freehand or drill rig use and drilling diameters from Ø10 mm to Ø30 mm

- with Intellitronik (electronic regulation, initial current regulation, electronic overload protection)
- with transport box and toolset
- with handle bar and additional handle
- with CEE 1h plug
- PRCD serial



DK 08 DK 09

new powerful drill motors DK 08 and DK 09 for bores up to Ø150 mm in concrete and up to Ø200 mm in masonry (DK 08 for wet drilling, DK 09 for wet- and dry drilling)

- simple dry drilling without external devices (DK09)
- overload protection by Intellitronik
- 2 integrated spirit levels
- practical accessories box
- PRCD serial



DK 18

compact and light weight drill motor for drill rig use and drilling diameters up to Ø180 mm

- with Intellitronik (electronic regulation, initial current regulation, electronic overload protection)
- with CEE 1h plug
- PRCD serial



DK 16 DK 17

powerful but compact and light weight drill motor for freehand or drill rig use, for drilling diameters up to Ø180 mm (DK 16 for wet drilling, DK 17 for wet- and dry drilling)

- with Intellitronik (electronic regulation, initial current regulation, electronic overload protection)
- with transport box and toolset
- with handle bar and additional handle
- with PRCD and Schuko plug
- with anti friction ring (DK 17)



	DK 11	DK 08	DK 09	DK 18	DK 16	DK 17
drilling diameter [mm]	10-30	30-150		20-180		
spindle	½"	½"+1¼"	1¼"	½"¹	½"¹	½"+1¼"
gears	1	2	2	3	3	3
rotation speed [min⁻¹]	8500	540/1700		540/1200/2520		
motor	1,8 kW 230 V	1,8 kW 230 V		2,0 kW 230 V		
slipping clutch	yes	yes	yes	yes	yes	yes
clamping diameter [mm]	60	60	60	60	60	60
weight [kg]	5,5	4,9	5,2	5,3	5,9	5,9
drill guide with water collecting ring (for drills up to 200 mm length and max. Ø35 mm)						

¹ DK 1803 and DK 1803 with combi-spindle ½"+1¼"



PIVOT SPIKE AS 13

Easy and precise start of drilling



type	Length of drill bit
AS 13.200	190 - 250 mm
AS 13.300	230 - 350 mm
AS 13.400	360 - 480 mm



ELECTRIC DRILL MOTORS 230 V

BDK 26 powerful 2,6 kW / 230 V motor for drilling diameters up to Ø250 mm

BDK 33 powerful 3,2 kW / 230 V drill motor for drilling diameters up to Ø350 mm

- overload protection by Intellitronic
- with PRCD and Schuko plug
- 3 gears
- with anti friction ring



BDK 25 new water cooled 230 V SR-motor with sufficient power reserves and 6 electronic rotation speeds for bores up to Ø370 mm

BDK 38 new water cooled 230 V SR-motor with large power reserves, 3 gears and 6 electronic rotation speeds for an exceptionally wide range of drilling diameters Ø40 - 400 mm

- extremely powerful due to 3,7 kW / 230 V SR-power
- no carbon brushes and collector
- low maintenance
- electronic control of rotation speed
- 6 electronic gears with LED-displaying of drilling diameter (BDK 25)
- 6 electronic gears with LED display x 3 gears results in 18 rotation speeds (BDK 38)
- change of rotation speed (electronic) while running engine
- multi-level overload protection
- service indication
- soft Turn: slow rotation speed for tool mounting
- with Schuko-plug
- anti friction ring
- BDK 25-BA and BDK 38-BA with built-in control system for automatic feed unit BA-50



Display with control panel of SR-motors



BDK 25



BDK 38

	BDK 26	BDK 33	BDK 25	BDK 38
drilling diameter [mm]	40 - 250	55 - 350	80 - 370	40 - 400
spindle	1 1/4"	1 1/4"	1 1/4"	1 1/4"
gears	3	3	6 (electronic)	18 (3 mechanical x 6 electronic)
rotation speed [min ⁻¹]	320/630 /980	230/480 /720	230-570	175-1370
motor	2,6 kW 230 V	3,2 kW 230 V	3,7 kW 230 V	3,7 kW 230 V
slipping clutch	yes	yes	yes	yes
weight [kg]	11,6	11,9	14,7	16,5

¹ BDK 26 / BDK 33 only



ELECTRIC DRILL MOTORS 400 V

BDK 4E

powerful, water cooled 3,9 kW / 400 V
drill motor for drilling diameters
up to Ø400 mm

BDK 4E S

powerful, water cooled,
high speed 3,9 kW / 400 V drill motor
for drilling diameters up to Ø300 mm

BDK 45E

powerful, water cooled 5,2 kW / 400 V
drill motor for drilling diameters
up to Ø500 mm

NEW

NOW WITH NEW FUNCTIONS:

- LED load indication
- phase monitoring for more safety
- monitoring of rotation direction
- improved motor protection by temperature sensor in windings
- electronic soft-start



BDK 65

new water cooled 400 V SR-motor
with sufficient power reserves and
6 electronic rotation speeds for
bores up to Ø500 mm

- extremely powerful due to 7,5 kW SR-power
- no carbon brushes and collector
- electronic control of rotation speed
- 6 electronic gears with LED-displaying of drilling diameter (BDK 65)
- 6 electronic gears with LED display x 3 gears results in 18 rotation speeds (BDK 68)
- change of rotation speed while running engine
- multi-level overload protection
- service indication
- soft Turn: slow rotation speed for tool mounting
- BDK 65-BA and BDK 68-BA with built-in control system for automatic feed unit BA-50

BDK 68

new water cooled 400 V
SR-motor with essential power
reserves, 3 gears and
6 electronic rotation speeds for
deep and exceptionally
challenging bores of
Ø50 - 350 mm

SR-technology



BDK 65

SR-technology



BDK 68

BDK 75

extreme powerful, water cooled
7,5 kW / 400 V SR-drill motor for
drilling diameters up to Ø900 mm

- motor protection by thermo sensor in stator windings, low voltage release and integrated power electronic
- 3 gears and 5 motor rotation speeds = 15 working speeds
- with oil-bath lubrication
- anti friction ring

BDK 75S

extreme powerful, water cooled
7,5 kW / 400 V SR-drill motor for
drilling diameters up to Ø800 mm

SR-technology



NEW

NEW

NEW

		BDK 4E	BDK 4E S	BDK 45E	BDK 65	BDK 68	BDK 75S	BDK 75
drilling diameter	[mm]	70-400	50-300	110-500	120-500	50 - 350	120-800	150-900
spindle		1 1/4"	1 1/4"	1 1/4"	1 1/4" or M33/3	1 1/4" or M33/3	M33/3	M33/3
gears		3	3	3	6 (electronic)	18 (3 mechanical x 6 electronic)	15 (3 mechanical x 5 electronic)	15 (3 mechanical x 5 electronic)
rotation speed	[min ⁻¹]	160/310/490	230/460/720	130/260/410	140-305	205-1370	75-460	60-360
motor		3,9 kW 400 V		5,2 kW 400 V	7,5 kW 400 V, 15 A		7,5 kW 400 V, 15 A	
slipping clutch		yes	yes	yes	yes	yes	yes	yes
weight	[kg]	19,0	19,0	22,9	18,3	16,5	19,5	19,5

WET/DRY CLEANER WITH INTEGRATED SLURRY PUMP NT-80P

NEW

Powerful vacuum cleaner for wet or dry applications with 80 liter stainless steel tank, integrated slurry pump for continuous disposal of slurry and with extensive wet and dry accessories kits in scope of delivery

- 2 high-performance motors with total 2,3 kW power enable airflow of 360 m³/h
- special by-pass motors ensure rapid cooling in case of overheating
- motor housing with noise protection screen
- reliable and maintenance free immersion slurry pump
- aluminum cast suction inlet Ø80 mm with quick coupling system (adapters for hoses Ø40-80 mm available on request)
- steel frame with special anti-corrosive epoxy-coating
- 4 wheels (2 swivel type, 1 with brake) for easy transportation
- indicator for hose blocking / filter clogging
- filter for dry dust with self cleaning system, which shakes off the dust each time the vacuum is switched off



Included in scope of delivery:

- accessory kit: Ø80 / 50 mm hose adapter, 3 m of Ø50 mm PVC flexible hose, aluminum flat nozzle, PVC floor brush
- wet kit: floater for motor protection against overflowing, nylon filter for protection of floater and motors from solid materials
- dry kit: double bag type nylon/polyester sandwich filter (3 µm, class L) for optimal air cleaning and long life

WATER SUPPLY TROLLEY WT-50

NEW

Large portable cistern with shock-resistant 50 liter plastic tank, built-in battery driven pump and transport wheels for water supply of core drilling machines.

Compared with usual manual 10 liter water supply vessels the WT-50 saves more than 50% of time for water supply on construction sites. Can be used for reduction of dust exposure from different cutting machines (floor saws, hand saws etc.)

- extra large volume of 50 liters for continuous operation without interruptions
- 12 V battery with charger and charge indicator
- up to 8 hours operating time with fully loaded battery
- integrated immersion pump 19 l/min; 0,85 bar with built-in battery
- large transport wheels
- 6 m hose with Gardena-coupling
- foldable for easy transport

NEW

		NT-80P
motor		2,3 kW; 230V; 50 Hz
vacuum rate	[bar]	0,25
air flow	[m³/h]	360
filter surface (bag filter)	[m²]	0,8
tank capacity	[l]	80
suction inlet	[Ø, mm]	80/50
noise level	[dB(A)]	73
length	[mm]	500
width	[mm]	480
height	[mm]	1080
weight	[kg]	42



NEW

		WT-50
tank volume	[l]	50
hose length	[m]	6
charging time of battery	[h]	≈ 10
charging voltage of battery	[V]	230
operating time	[h]	≈ 8
water flow	[l/min]	19
dimensions LxWxH	[mm]	850x500x750
empty weight	[kg]	31



Starter kit with accessories box

Stable metal carrying case with complete accessories for core drilling machines (5 m water hose with connectors, hammer, dowel tool M12, 50 anchor bolts M12 (Ø 16 mm), thread rod with big screw nut, 5 copper rings, screw-wrenches 24, 32 and 41 mm, folding rule and pencil)



Starter kit

VP 80

compact vacuum pump with 5 l tank and powder coated housing

		VP 80	VGP
power	[kW]	0,2 kW, 230 V	-
air flow	[l/min]	80	-
tank capacity	[l]	5	-
length	[mm]	350	340
width	[mm]	220	250
height	[mm]	280	-
weight	[kg]	10	4



VGP

vacuum basic plate made of aluminium casting with air valve for release and thread rod with screw nut

Quick fastening support SP1

quick fastening support SP1 up to 3150 mm

		SP1
length min.	[mm]	1700
length max.	[mm]	3150

NL 3/70 T/N

robust and powerful wet/dry cleaner with stainless steel container, incl. 2,5 m hose and accessories



		NL 3/70 T/N
power	[kW]	3 x 1,1 kW, 230 V
air flow	[l/min]	9000
capacity	[l]	70
length	[mm]	470
width	[mm]	470
height	[mm]	1080
weight	[kg]	22

WBK III

10 l plastic water supply vessel with safety valve

WBM II

10 l metal water supply vessel with manometer and safety valve

		WBM II	WBK III
capacity	[l]	10	10
length	[mm]	220	200
width	[mm]	220	200
height	[mm]	600	580
weight	[kg]	5,5	2,9



FI 400

FI-Box in hard rubber case with 1 x 32A 6h, 1 x 16A 6h and 2 x Schuko

FI 230

FI-Box in hard rubber case with 1x CEE 1h and 3x Schuko



		FI 230	FI 400
weight	[kg]	2,8	3,0

ACCESSORIES FOR DIAMOND CORE DRILLING MACHINES

Other accessories are available on request



accessories	
1	anchor bolt M12, type Rawel
2	standard anchor bolt Ø16xM12 (50 pcs)
3	heavy load anchor (various types)
4+5 +9	Set FDBB consists of spindle-bolt FDBB, big screw nut and 25 pieces anchor bolt FDBB 16/50
5	anchor bolt FDBB 16/50 (25 pcs.)
6	dowel tool M12
7	thread rod M12
7+8	thread rod M12 with hexagon nut M30
7+9	thread rod M12 with big screw nut
10	copper rings (100 pcs)



K50MF

K50M



special accessories

joint nut

K50M - nut with swivel joint

K50MF - nut with swivel joint and spring



NUT WITH SWIVEL JOINT

- compensates the inclination of the thread rod
- fits to all thread rods
- reduces the risk of breakage of the thread rod
- allows the exact positioning of drill rigs with minimal force (only design with integrated spring)

ANCHOR BOLT

Ø16xM12 with grooving



NEW



NEW

quantity

50



ADAPTERS

for diamond core drills

Other accessories are available on request



EXTENSIONS

for diamond core drills

Other accessories are available on request



adapters

1 1/4"	M	r 1/2"	M
		M 38	Z
1 1/4"	Z	r 1/2"	Z
		M 38	M
M - Sleeve		Z - Pivot	



extensions

1 1/4"	1/2"
SW41	SW22

(mm)

(mm)

100

200

300

400

500



Price per piece, ex works. Our general conditions apply.
For articles marked with the conditions for machines apply.

SB-SP



- Super premium segments
- segment height 9 mm
- roof top segments Ø 50 - 225 mm
- for hard reinforced concrete, natural stone, refractory materials

SA-P / SG-P



- Premium segments
- segment height 9 mm
- roof top segments Ø 50 - 225 mm
- SA-P asphalt and masonry
- SG-P natural stone

SB-S



- Standard segments
- segment height 9 mm
- roof top segments Ø 50 - 225 mm
- concrete (reinforced), masonry



Ø (mm)	segment-		
	length (mm)	width (mm)	height (mm)
25/35	17	3,0	7
50/60/70/80	24	3,5	9
80/100/120	24	3,5	9
80/100/120	24	4,0	9
150/200	24	4,0	9
150/200	24	4,5	9
150/200	24	5,0	9
straight from 250	20	5,0	9
straight from 250	20	5,5	9

other specifications are available on request

BRAZING MAGNETS



- double sided magnets for the brazing of core drills with defined segment overhang
- LM1 overhang 0,5 mm (no chamfer)
overhang 1,25 mm (3 chamfers)
- LM2 overhang 0,75 mm (1 chamfer)
overhang 1,0 mm (2 chamfers)

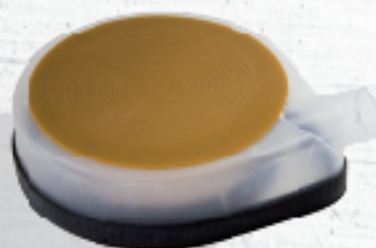
	LM1	LM2
weight [g]	45	45



UNIVERSAL WATER COLLECTING RINGS WSR

for collecting of drilling slurry up to drilling diameter Ø100 mm (WSR100), Ø150 mm (WSR150), Ø200 mm (WSR200), Ø250 mm (WSR250), Ø300 mm (WSR300) and Ø350 mm (WSR350)

WSR ring with rubber membrane

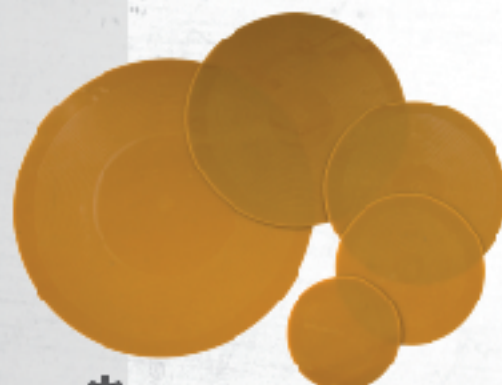


- no additional fixation necessary
- applicable independent of the drill rig
- attaches itself by vacuum generated by vacuum cleaner
- NEW: now with better optical control, thanks to a transparent version
- essential time saving for mounting operation
- minimizes the slurry's dispersions



Water collecting rings

water collecting ring WSR 100
water collecting ring WSR 150
water collecting ring WSR 200
water collecting ring WSR 250
water collecting ring WSR 300
water collecting ring WSR 350
Spare rubber seal 1,0 m
Adhesive tape 1,5 m
(for fixation of membranes)



WSR rubber membrane

Price per piece, ex works. Our general conditions apply.
For articles marked with the conditions for machines apply.

DIAMOND DRILL BITS

BETON SP



- Super premium diamond core drill
- segment height 9 mm
- roof top segments Ø50 - 225 mm
- for hard reinforced concrete, natural stones, refractory materials

ASPHALT P/ GRANIT P



- Premium diamond core drill
- segment height 9 mm
- roof top segments Ø50 - 225 mm
- Asphalt P asphalt and masonry
- Granit P natural stone

BETON S



- Standard diamond core drill
- segment height 9 mm
- roof top segments Ø50 - 225 mm
- concrete (reinforced), masonry



Standard working length: 450mm



All other diameters and working lengths are available upon request!!!

Ø	segment				
	length	width	amount		
[mm]	[mm]	[mm]	B-S A-P [pcs]	G-P [pcs]	SP [pcs]
25 ¹	17	3,0	3	3	-
35 ¹	17	3,0	4	4	-
40 ¹	17	3,0	5	4	-
52	24	3,5	5	4	5
62	24	3,5	6	4	5
72	24	3,5	7	5	6
82	24	3,5	7	5	6
92	24	3,5	8	6	7
102	24	3,5	9	7	8
112	24	3,5	9	7	8
122	24	3,5	10	8	9
132	24	3,5	10	8	9
142	24	4,0	10	8	10
152	24	4,0	11	9	10
162	24	4,0	12	10	11
172	24	4,0	12	10	11
182	24	4,0	13	11	12
200	24	4,0	14	12	13
225	24	4,0	15	13	14
250	20	5,0	18	18	18
257	20	5,0	18	18	18
300	20	5,0	22	20	22
350	20	5,0	24	-	24
400	20	5,0	28	-	28
450	20	5,0	28	-	28
500	20	5,5	28	-	28
600	20	5,5	30	-	30
700	20	5,5	35	-	35
800	20	5,5	40	-	40
900	20	5,5	45	-	45
1000	20	5,5	50	-	50

¹ segment height 7 mm, no roof top segment

standard length 450 mm
machine power 1-20 kW
Standard connection 1 1/2", 1 1/4",
BBT, M38, 3 holes and 6 holes on request

² after returning of used core drill.

Further dimensions and segment specifications such as turbo-segments or thin segments are available on request.

DIAMOND DRILL BITS

TBK



- Premium dry core drill for dry drilling
- segment height 9 mm
- roof top segments up to Ø225 mm
- for masonry, artificial sandstone, abrasive materials

DL-B



- thin walled core drills with ring segments
- premium concrete
- reinforced concrete, masonry

DL-E



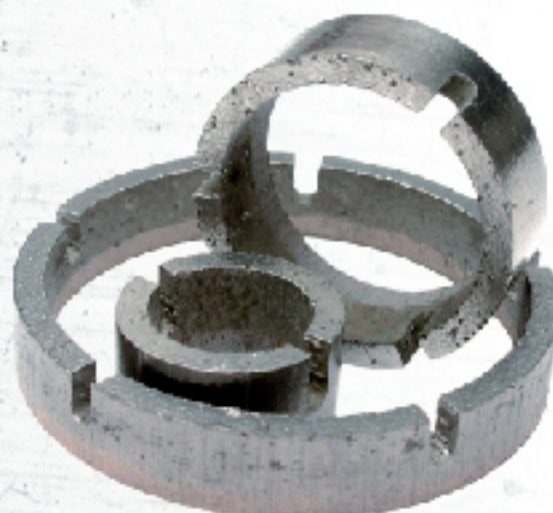
- thin walled core drills with ring segments
- standard ECO
- for universal use



Ø	length	segment width	amount
[mm]	[mm]	[mm]	
40	17	3,0	3
52	24	3,5	3
62	24	3,5	3
72	24	3,5	4
82	24	3,5	4
92	24	3,5	4
102	24	4,0	5
112	24	4,0	5
122	24	4,0	5
132	24	4,0	5
142	24	4,0	5
152	24	4,0	6
162	24	4,0	6
172	24	4,0	6
182	24	4,0	7
200	24	4,0	8
225	24	4,0	9
250	20	5,0	14

¹ after returning of used core drill.

other dimensions are available on request



DLR-B



- thin ring segments
- premium concrete
- concrete (reinforced), masonry

DLR-E



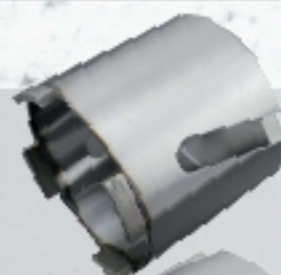
- thin ring segments
- premium universal
- for all purposes

DS-LB 2.0



- Premium switch hole bit
- laser concrete
- for concrete (limited), high density artificial sandstone
- working length: 80mm

NEW



DS-LM 2.0



- Premium switch hole bit
- laser masonry
- for masonry, artificial sandstone, porcelain and bricks
- working length: 80mm

NEW



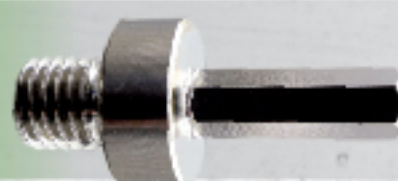
accessories for switch hole bits



Ø [mm]	connection
68	M16
82	M16

SDS connection / M16 / tapered
 SDS connection / M16 / with screw
 hexagon connection / M16 / tapered
 hexagon connection / M16 / with screw
 center drill for connection with screw
 center drill for SDS connection
 tapered

Adapter M14 - hexagonal bolt



CERAM DRILL NT

	Ceram Drill NT
connection	M14 (Ø6-14 optionally with hexagon)
application	
machine	angle grinders
working height	10 mm
effective length	Ø6-14 mm 35 mm Ø20-110 mm 40 mm
materials	hard ceramics, fine stoneware, tiles, thin natural stone plates



Ceram Drill NT

Ceram Drill NT with M14-connection



Ø (mm)
6
8
10
12
14
20
27
35
40
45
50
55
60
65
68
75
82
100
110

*with special wax filler - for better cutting speed and longer tool life
 †optionally with hexagon shaft available